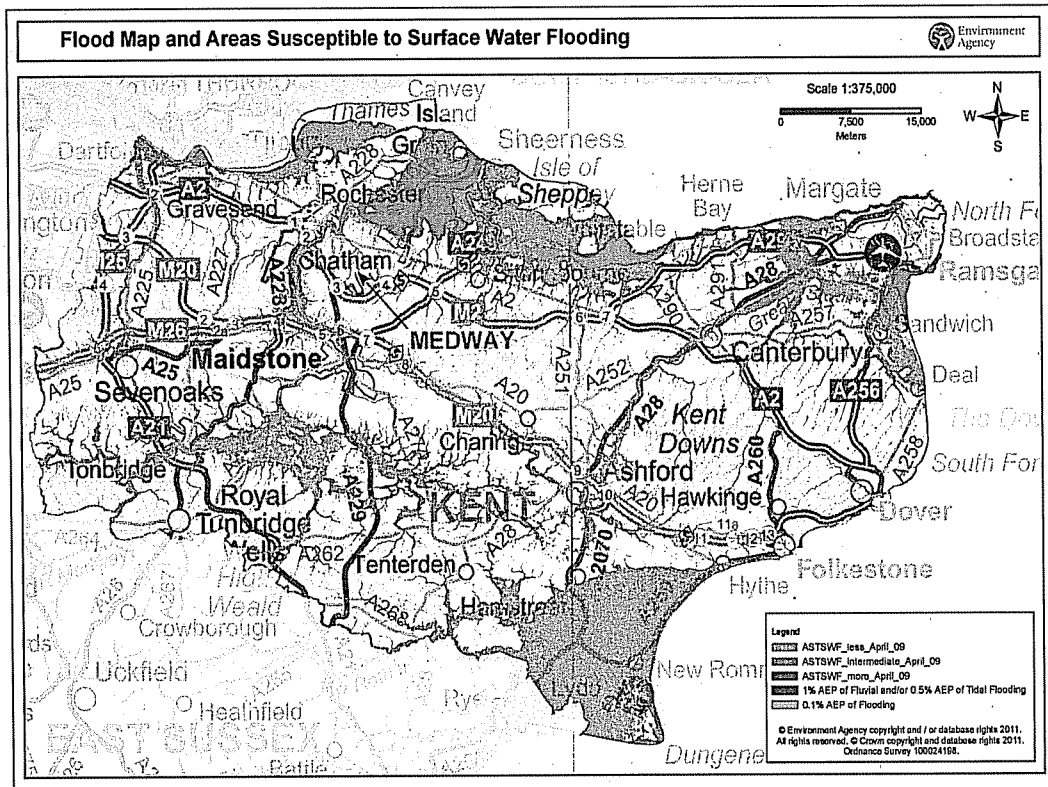




Flood & Coastal Erosion Risk Management in Kent



Properties at risk from surface water flooding:

75,800

Properties in Kent at risk from rivers or the sea:

250, 000

Current capital funding 12/13:

£17 million

Number of properties protected next year:

3120

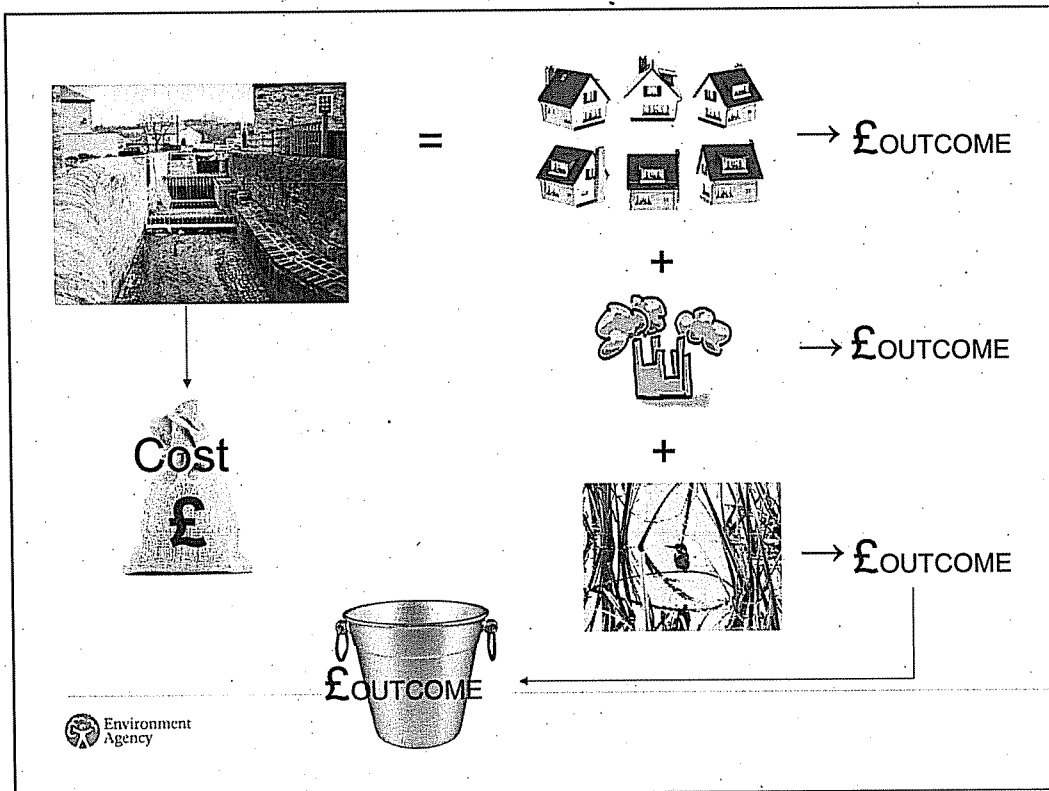
Identifying Potential Flood Risk Schemes

**Shoreline Management
Plans**

Local Authority / EA

Post Flood event identification

**Catchment Flood Management
Plans**



Each project will receive a (suggested) FDGiA contribution according to the future outcomes

OM1 – benefits against the ‘do nothing’

OM2s – protecting households from flood risk (£0.7k to £14k per household)

OM3s – protecting households from coastal erosion (£5k to £33k per household)

above are the maximum value over 50 years

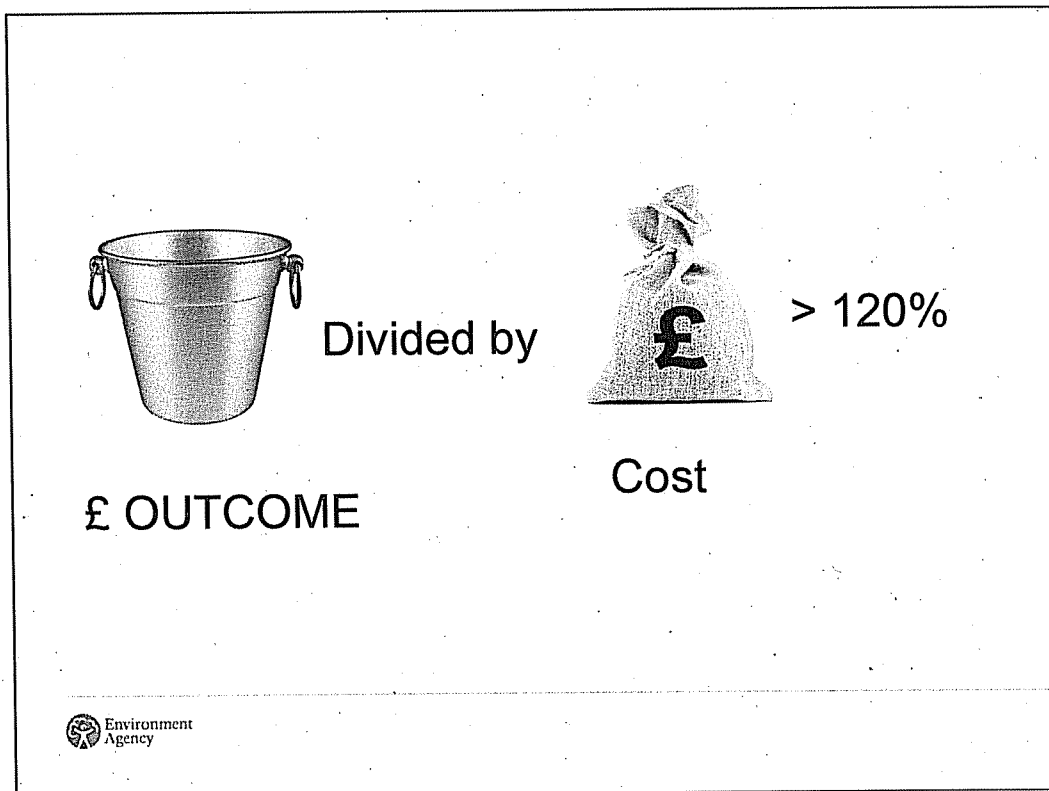
OM4s – households protected by resistance / resilience (£10k to £15k per household)

to meet WFD objectives

OM5 – km of protected river (£80k/km)

OM6 – ha of inter-tidal habitat created (£50k/ha)

OM7 – ha of water dependant habitat improved (£15k/ha)



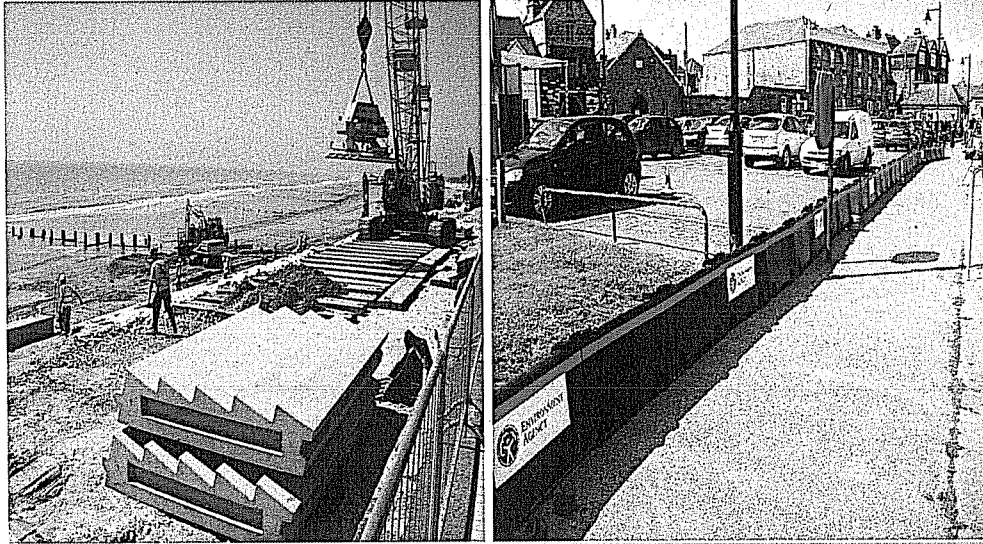
Project funding scenarios


Where a project with Whole Life Cost of £2m

moves 312 properties from (very) significant to a lower risk category it should received 100% FDGiA contribution (£2m = 312* £6,415)

moves 156 properties from (very) significant to a lower risk category it would only received £1m FDGiA contribution (156* £6,415), therefore at least £1m contribution (or reduction in WLC)

Flood Defences



 Environment Agency